



MEDIA PACKET

2022 GENERAL ELECTION

GOV.elec.media@alaska.gov

TABLE OF CONTENTS

Media Briefing Information	3
General Election Dates	4
Frequently Asked Questions	5
General Election	5
Counting & Results Reporting	5
Absentee Voting	6
Language Assistance	7
Additional Questions	8
Helpful Webpages	9
Election Recount Statutes	9
Reading Election Results	10
House and Senate District Designations	12
Ballot Counting Methods and Equipment	13
Election Security	14
Ballot Chain of Custody Infographic	15
Sample RCV Detailed Report	16-18

MEDIA BRIEFING

Wednesday, November 2, 2022

10:00AM Alaska Standard Time

<https://www.zoomgov.com/j/1601674048?pwd=RnAzNkgzcZjYkzUctOdGxUeldJQT09>

Meeting ID: 160 167 4048 Passcode: 631144 Join by SIP: 1601674048@sip.zoomgov.com

One tap mobile: +16692545252,,1601674048# US (San Jose) +16692161590,,1601674048# US (San Jose)

Dial by location: +1 669 254 5252 US (San Jose) +1 646 828 766 US (New York) +1 551 285 1373 US

Find your local number: <https://www.zoomgov.com/u/aeGSJJQV8E>

Join by H.323: 161.199.138.10 (US West) 161.199.136.10 (US East)

MEDIA GUIDELINES

For all press inquiries, regardless of region, please contact GOV.elec.media.alaska.gov or the Director's Office at 907-465-4611. The email account is run by Director, Gail Fenumiai, and Public Relations Manager, Tiffany Montemayor.

Polling Place Photography and Video

Please contact the Director's office first with your request. When you arrive at a polling place, you must let the Election Chair know who you are so they can issue a Division Press Badge. You must only go where the Election Chair specifies. All Poll Workers must agree to be photographed or filmed. You cannot interfere with voting. Do not take any close-up shots of voted ballots or registers. Please only speak to voters outside of the polling place. If you would like to conduct exit polls, we must know ahead of time so we can issue you an Exit Pollster badge.

Regional Office Photography and Video

Please contact the Director's Office first. Regional Offices are incredibly busy during election season. We will coordinate your office visits. You must only go where the Regional Supervisor specifies. Do not take any close-up shots of voted ballots or registers.

OUR OFFICES

Director's Office

240 Main Street, Suite 400 Juneau, Alaska 99801-0017 | (907) 465-4611 | Gail Fenumiai, Director

Region I Juneau

House Districts 1 – 6

Region II Anchorage

House Districts 9 – 24

Region III Fairbanks

House Districts 31 – 36

Region IV Nome

House Districts 37 - 40

Region V Wasilla

House Districts 7 – 8 and 25 - 30

2022 GENERAL ELECTION DATES

October 24	Early or absentee in-person, electronic transmission, and special needs voting begins. Locations, dates, and times are on the division's website at AKVoteEarly.alaska.gov
October 29	Deadline to receive absentee by-mail ballot applications.
November 7	Deadline to receive absentee electronic transmission applications by 5pm.
November 8	General Election Day – Polling Places are open from 7am to 8pm. Unofficial results posted on the Division of Elections website after 9pm. Some Early Voting and Absentee In-Person sites will also be open.
November 8	Deadline for absentee ballots returned by mail to be postmarked.
November 8	Deadline for absentee electronic transmission ballots returned by fax by 8pm.
November 15	Seven-day count for absentee, early and questioned ballots. (Note there may be additional counting days between day 7-10.)
November 18	10-day deadline to receive absentee ballots mailed from within the U.S.
November 18	Ten-day count for absentee, early and questioned ballots.
November 23	15-day deadline to receive absentee ballots mailed from outside the U.S
November 23	15-day count for overseas absentee ballots. Review races to determine if any candidates received 50% + 1 vote. If not, start ranked choice tabulation.
November 29	Target date for State Review Board to certify election.
December 2	Deadline to request a recount for Governor and Lieutenant Governor (based on certification date of November 29). A recount must be filed within three days after the completion of the State Review Board.
December 4	Deadline to request a recount for all other offices (based on certification date of November 29). A recount must be filed within five days after completion of the State Review Board.
December 5	Constitutional deadline for Governor and Lieutenant to be sworn into office.
December 9	Deadline to file an election contest (based on certification date of November 29). An election contest must be filed within 10 days after completion of the State Review Board.

FREQUENTLY ASKED QUESTIONS

GENERAL ELECTION

What is Ranked Choice Voting?

Voters may rank candidates in order of preference and ballots are counted in rounds. If a candidate gets 50% + 1 vote in round one, they win. If no one does, the candidate with the fewest votes is eliminated and those votes are distributed to the voters' next choice on those ballots.

This ensures that voters can still have a say in who wins if they rank more than one candidate. This process continues until there are two candidates left and the one with the most votes wins.

Can a voter write-in a candidate?

Yes. Write-ins will only be counted if the aggregate of all first choice votes cast for all write-ins for the race is:

1. The highest number of first choice votes received by any candidate for the office *or*
2. The second highest and the difference between the total number of first choice votes received by the leading candidate and the first choice votes received by all the write-in candidates is less than .5 percent. (That percentage is calculated by dividing the difference by the total number of first choice votes received by the leading candidate and the write-ins.)

If the write-ins do not meet the above requirements, all write-in candidates are defeated. If the write-ins do clear this threshold, by leading or coming in a close second in the first round, the Division will count the write-ins and treat them as individual candidates in the ranked choice tabulation.

What has the Division done to educate voters about Ranked Choice Voting

The Division developed a voter education campaign that includes television, digital, radio, social media, newspaper ads, videos, mock elections,

presentations, print materials, and informational content. The Division began its Ranked Choice Voting education campaign in March of 2021. Radio and print ads were strategically placed in rural areas of the state. Informational mailers in English and at least 9 other languages were sent to voters. Translated videos, mock elections, and website content is available as well.

The Division engages with voters via social media posts and conversations. The Division partnered with organizations around the state to ensure correct and consistent messaging. Finally, we entrusted the media to help us reach and inform voters with vital and sometimes urgent information and we are grateful to those who obliged.

COUNTING AND RESULTS REPORTING

Will results be available by precinct?

Results will be available by precinct for Election Day voting. Only the first choice results will be available by precinct in a Ranked Choice Voting race. This is because precinct scanners cannot perform ranked choice voting tabulation.

Which ballots will be counted on Election Night?

Election Night results will include ballots voted at polling places on Election Day and ballots voted at Early Voting locations from October 24 through November 3.

How many results updates will there be on Election Night and when?

We anticipate the first set of unofficial results being published around 9pm. There will be additional results updates that follow but we do not know how many or at what time they will be published. We will notify our media contacts by email each time an update is published and to let you know when we are done reporting for the night.

Will the Division Livestream Ranked Choice Voting tabulation?

Yes. KTOO will provide live Gavel Alaska special coverage of the Alaska Ranked Choice Vote Count from the Alaska Division of Elections headquarters in Juneau on Wednesday November 23rd at 4pm Alaska Time (8pm Eastern / 5pm Pacific).

The event will be broadcast live on KTOO 360TV, which is available via over-the-air broadcast, cable, satellite, and the ARCS television services across Alaska; and can be streamed live on the KTOO Roku app and online at ktoo.org/tv.

The video will be available after the event for on-demand viewing in the Gavel Alaska online archive at ktoo.org/gavel. All the ways to watch are available online at <https://ktoo.org/tv>.

Coverage will be available to other media organizations. Details on audio & video feed options will be provided closer to the event date. Please contact Gavel Alaska Producer Will Mader (will.mader@ktoo.org) to make arrangements for use & access to feeds.

Can the media view the tabulation in person?

Yes. Contact the Division for information.

Will the Division provide absentee ballot rejection statistics before, and after Election Day?

Yes. We will email the media when as the Combined Ballot Reports are available on our website. The reports will not show statistics for the reasons ballots were rejected.

Will the Division begin reviewing and counting absentee ballots before Election Day?

The Absentee Review Board will begin reviewing ballots for eligibility by November 1. Some Absentee By-Mail and Absentee In-Person ballots will be counted on Election Day with subsequent

counts taking place up to the 15th day following the election.

Will the Division provide a report showing how many and why ballots were rejected?

Yes. This report will not be available until the State Review Board has certified the elections.

ABSENTEE VOTING

Is the Division automatically mailing absentee ballots to all voters?

No. That was only done for the Special Primary Election because it was an all by-mail election.

Is return postage pre-paid for absentee by-mail ballots?

No. The Special Primary Election was the only time the Division provided pre-paid postage as that election was an all by mail election.

Does the Division verify signatures on absentee ballots?

No.

Can a voter vote in person if they requested an absentee ballot? What should they do with their absentee ballot?

Yes, voters may vote in person at an Early Voting location, an Absentee In-Person location, or at a Polling Place on Election Day. Voters should throw away their unvoted absentee mailed ballot. They do not have to bring the ballot with them to vote in person.

What should voters do if they haven't received their ballot, or they lost it?

Voters can vote at any Early or Absentee In-Person Voting Location or request a ballot be sent by electronic transmission. Deadline to request a replacement ballot by electronic transmission is November 7, 5:00pm AST. Ballots sent via electronic transmission (fax or email) must be

returned to the division by fax or mail. When returning by mail, it must be postmarked on or before Election Day, November 8. When returning by fax, ballots must be received by 8:00pm AST on Election Day, November 8. We do not accept any ballots returned to us via the internet, including email.

Can voters contact the Division if they forgot to get a witness signature or provide other required information on an absentee by-mail ballot? Is there a way to provide that information on an alternate ballot after the fact?

State law does not provide for a cure process. Once a ballot is received by the division, no changes can be made by the voter.

What is the difference between Early Voting and Absentee In-Person Voting?

At an Early Voting location, election workers verify the voter's eligibility to vote at the time they appear to vote. There is no further review required. Voters scan their ballot at the Early Voting Location. Voting Tablets are available at Early Voting Locations.

At an Absentee In-Person Voting Location, voters complete an Absentee In-Person Ballot Oath & Affidavit Envelope and seal their voted ballot inside, then place their ballot envelope in a ballot box. The ballot envelopes are sent to the appropriate regional election office for review by the Absentee Review Board to determine voter eligibility prior to opening and counting. The same review process is followed as for by-mail ballots. There are no voting tablets available at Absentee In-Person Voting locations.

Will drop boxes be available? Can voters turn in their absentee ballot into a Division Office or in-person voting location?

Drop boxes will not be available. Voters can turn in their absentee ballot to one of our offices or any

voting location. The voter must do so by 8pm on November 8, Election Day.

LANGUAGE ASSISTANCE

What kind of assistance is provided on Election Day?

There are bilingual election officials available to assist voters or a voter may have a person of their choice assist them. That person may not be a candidate, employer, agent of their employer, or agent of union. The person chosen to assist the voter may go into the voting booth to help them cast their ballot. Translators for required languages are also available on standby via telephone on Election Day at 1-866-954-8683 (toll free within the U.S.).

What kind of assistance is provided to voters throughout the year?

The Division's language assistance program provides the same translated election and education materials for languages that are historically written and for languages that are historically unwritten, such as Alaska Native languages. In addition to on-call interpreters available on Election Day, the Division provides oral language assistance through using bilingual registrars, outreach workers, bilingual election officials, and translators in communities where there is a need. The Division of Elections also produces audio translations of election information and translated radio and TV announcements. Translated sample ballots, glossaries, voter registration applications, and other educational materials are also made available on the Division's website.

In what languages does the Division provide assistance?

In addition to the guidance issued in Section 203 of the Voting Rights Act, the 2021 Second Stipulated Order in *Toyukak, et. al. v. Meyer, et. al.*, and other

census data, the Division of Elections uses information provided Section 203 Determinations, census data, and Toyukak Settlement information to survey tribes and local governments in order to strategize the delivery of services needed.

- Filipino (Tagalog)
- Spanish
- Yup'ik (6 dialects)
- Nunivak Cup'ig
- Northern Iñupiaq
- Gwich'in
- Aleut

ADDITIONAL QUESTIONS

Can a person register to vote before they are 18?

A person may register 90 days before turning 18 but must be 18 when they vote.

Can a new U.S. citizen vote?

If a person becomes a U.S. citizen and registers to vote at least 30 days prior to the election, they may vote.

Can a person who was a convicted of a felony involving moral turpitude vote?

If a person's voting rights have been restored and they have been unconditionally discharged, they may register. They must register to vote at least 30 days prior to the election, to participate in the election.

What if a voter's name is not on the register or the register indicates they have already voted?

If a voter's name does not appear on the precinct register, the voter must vote a **questioned ballot**. Before receiving a ballot, the voter must complete a questioned ballot oath and affidavit envelope. After voting, the ballot is placed in a secrecy sleeve and then the secrecy sleeve is sealed inside the completed questioned ballot envelope. All questioned ballots are returned to the Election Supervisor for review and counting by the Questioned Ballot Review Board.

How can a person find out where they can vote?

A voter may find where their polling place using <https://myvoterinformation.alaska.gov/> or our new interactive map (link on elections.alaska.gov)

Does a voter have to bring identification to vote at a polling place?

Voters MUST be prepared to show on one of the following forms of identification:

- Voter Registration Card
- Alaska Driver's License
- Alaska State ID card
- Current and valid photo ID card
- Military ID card
- Birth certificate
- Hunting or fishing license
- Current utility bill, government check, bank statement, paycheck, or other government document that contains voter's name and current address

If a voter does not have identification and is not personally known by an election official the voter must vote a questioned ballot.

Is campaigning allowed near the polls?

Alaska law prohibits political persuasion within 200 feet of any entrance to a polling place during the hours the polls are open. This means that there may not be any discussion or display or campaign items for candidates or issues appearing on the ballot at that polling place.

May a person take their completed sample ballots or written list into the voting booth?

Yes. A person may take this information with them to the polls to help them vote.

HELPFUL WEBPAGES

Results Reporting:

<https://www.elections.alaska.gov/election-results/>

Absentee, Early, and Questioned Ballot Statistics:

<https://www.elections.alaska.gov/doc/info/statstable.php>

Polling Place Locations:

<https://www.elections.alaska.gov/election-polls/>

Early & Absentee In-Person Voting Locations:

<https://www.elections.alaska.gov/avo/>

Candidate Lists:

<https://www.elections.alaska.gov/candidates/>

Sample Ballots:

https://elections.alaska.gov/Core/sampleballots_2022general.php

Ranked Choice FAQ:

<https://www.elections.alaska.gov/RCV.php>

Election Process & Security Framework Guide:

<https://www.elections.alaska.gov/doc/forms/Alaska%20Election%20Process%20Guide.pdf>

ELECTION RECOUNT STATUTES

The statutes listed below relate to election recount procedures and can be found at -

<https://www.akleg.gov/basis/statutes.asp#15.20.430>

Sec. 15.20.430. Authorization of recount application.

Sec. 15.20.440. Form of application.

Sec. 15.20.450. Requirement of deposit.

Sec. 15.20.460. Determination of date of recount.

Sec. 15.20.470. Requirement of notice.

Sec. 15.20.480. Procedure for recount.

Sec. 15.20.490. Certification of results.

Sec. 15.20.510. Provision for appeal to courts.

Sec. 15.20.520. Provision for appeal to legislature or Congress.

Sec. 15.20.530. Determination of tie votes.

READING ELECTION RESULTS

Results will be available at <https://www.elections.alaska.gov/election-results/>

All reports will be available in PDF, .txt, and .xml format. The .txt and .xml formats may not become available at the same time the pdf's are but will follow shortly after.

On November 8, election night, the Division will release an Election Summary Report and a Statement of Votes Cast. **These two reports will only show first choice results.** If ranked choice tabulation is required, an additional report called the "RCV Detailed Report" will be published.

RCV DETAILED REPORT

This report shows what happens in each round of a race that uses Ranked Choice Voting. **The RCV Detailed report will be published once tabulation is completed on November 23.** The first page of the report shows the tabulation options the Division set for the algorithm to follow. See sample report and definitions on pg. 16-18.

STATEWIDE SUMMARY REPORT

This report shows the total number of votes for each race on the ballot. It will show all statewide races first, followed by state senate and state house district races. The top of the report reflects information about the ballots cast as follows:

Precincts Reported: 401 of 401 (100%)
 Registered Voters: 200,000 of 600,000 (33.33%)
 Ballots Cast: 200,000

U.S. SENATE (Vote for 1)

Precincts Reported: 401 of 401 (100%)

	Total	
Times Cast	150,000/ 600,00	25%
Candidate	Total	
Heather Olson	35,000	23.33%
Chick Hicks	15,000	10%
Naomi Jackson	30,000	20%
Brent Mustangburger	10,000	6.66%
Tiffany Strait	60,000	40%
Total Votes	150,000	
	Total	

US REPRESENTATIVE (Vote for 1)

Precincts Reported: 401 of 401 (100%)

	Total	
Times Cast	130,000/ 600,000	21.6%
Candidate	Total	
Duke Caboom	29,900	23.02%
Bob Gunderson	40,000	30.79%
Buzz Lightyear	30,000	23.09%
Cal Weathers	20,000	15.40%
Action Jackson	10,000	7.70%
Total Votes	129,900	
	Total	

Precincts Reported	Of the number of precincts where the race appears, this is the number that has reported results. Throughout Primary Election night, this number changes as precinct results are reported
Registered Voters	Number of registered voters in the State of Alaska
Ballots Cast	Total number of ballots cast
Times Cast	Number of ballots counted in the individual race
Total Votes	Number of votes counted in the individual race. This number may be lower than "times cast" because some voters may choose not to vote in the race

STATEMENT OF VOTES CAST

This report contains the individual district and precinct results for each race.

Registered Voters	Number of registered voters in the State of Alaska
Cards Cast	Total number of ballots cast
Voters Cast	Number of voters that cast ballots
% Turnout	Number of cards cast divided by number of registered voters, expressed as a percentage
Times Cast	Number of ballots counted in the individual race
Total Votes	Number of votes counted in the individual race. This number may be lower than “times cast” because some voters choose not to vote in the race

Precinct	Registered Voters	Cards Cast	Voters Cast	% Turnout
Statewide				
State of Alaska				
01-446 Aurora	3,000	400	400	13.33%
01-455 Fairbanks No.1	7,000	1,000	1,000	14.28%
District 1 - Absentee	0	540	540	N/A
District 1 - Question	0	105	105	N/A
District 1 - Early Vote	0	300	300	N/A
State of Alaska - Total	10,000	2,345	2,345	23.45%
Statewide - Total	10,000	2,345	2,345	23.45%

U.S. SENATE

Precinct	Times Cast	Registered Voters	Precinct	Naomi Jackson (NON)	Brent Mustangburger (DEM)	Tiffany Strait (AIP)	Total Votes
Statewide			Statewide				
State of Alaska			State of Alaska				
01-446 Aurora	400	3,000	01-446 Aurora	95	125	180	400
01-455 Fairbanks No.1	1,000	7,000	01-455 Fairbanks No.1	380	200	420	1,000
District 1 - Absentee	540	0	District 1 - Absentee	125	250	165	540
District 1 - Question	105	0	District 1 - Question	18	40	47	105
District 1 - Early Vote	300	0	District 1 - Early Vote	80	75	145	300
State of Alaska - Total	2,345	10,000	State of Alaska - Total	698	690	957	2,345
Statewide - Total	2,345	10,000	Statewide - Total	698	690	957	2,345

STATE OF ALASKA
DIVISION OF ELECTIONS
HOUSE AND SENATE DISTRICT DESIGNATIONS

Based on "May Interim 2022 Proclamation Plan" May 24, 2022

SENATE DISTRICT	HOUSE DISTRICT	HOUSE DISTRICT
A	1 Ketchikan/Wrangell/Metlakatla	2 Sitka/Petersburg/Yakutat
B	3 Mendenhall Valley/Haines/Skagway/Gustavus	4 Downtown Juneau/Douglas/Juneau Airport
C	5 Kodiak/Seward/Cordova	6 Kachemak Bay/Ninilchik/Kasilof
D	7 Kenai/Soldotna	8 Northern Kenai Peninsula
E	9 South Anchorage/Turnagain Arm/Whittier	10 Oceanview/Klatt
F	11 Lower Hillside	12 Far North Bicentennial Park
G	13 Campbell	14 Spenard
H	15 Sand Lake/Campbell Lake	16 Anchorage Airport
I	17 Downtown Anchorage	18 Government Hill/JBER/Northeast Anchorage
J	19 Mountainview/Airport Heights	20 U-Med
K	21 South Muldoon	22 North Muldoon
L	23 Eagle River Valley	24 North Eagle River/Chugiak
M	25 Palmer/Butte	26 Goose Bay/Gateway
N	27 Wasilla/Meadow Lakes	28 Tanaina/Lakes
O	29 Eastern Mat-Su/Valdez	30 Houston/Big Lake/Parks Highway
P	31 Downtown Fairbanks	32 East Fairbanks/Fort Wainwright
Q	33 North Pole/Badger	34 Steele Creek/Two Rivers/Eielson/Salcha
R	35 College/Ester/Chena Ridge	36 Copper River Basin/Delta/Tok/Yukon Drainage
S	37 Bristol Bay/Aleutians/Kuspuk	38 Lower Kuskokwim
T	39 Bering Straits/Yukon Delta	40 Arctic

BALLOT COUNTING METHODS & EQUIPMENT

HAND COUNT PRECINCTS

Hand count precincts are typically in areas of the state where precincts have a small number of voters. Voters drop their ballot into a ballot box and after the polls close, the poll workers hand count the ballots and record results on a summary sheet. The results are reported to their assigned regional elections office. The regional elections office then submits the results to the Director's Office. There are 131 hand-count precincts in Alaska.

ImageCast PRECINCT SCANNER

Voters insert their completed ballot into the scanner and when polls close, poll workers direct the scanner to tabulate results. A results tape for the precinct is printed and signed by the election official. The results are transmitted to the Director's Office. There are 270 ImageCast precincts in Alaska.

ImageCast VOTING TABLETS

Each precinct in Alaska will have a voting tablet that produces a paper ballot. Voting tablets are intended for use by voters who may be visually impaired, have mobility issues, have difficulty reading, or who require language assistance. Each voting tablet has either a laser printer which prints a ballot that the voter inserts into the precinct scanner or a Voter Verified Paper Audit Trail (VVPAT) ballot printer. After the polls close, results are transmitted to the Director's Office or called into the regional elections office who submits the results to the Director's Office.

ImageCast CENTRAL COUNT

This equipment is used at the five Regional Offices to count reviewed absentee and questioned ballots, and some early voted ballots.

ELECTION SECURITY

The Division is dedicated to the security and accuracy of our election process and recognizes that any election system is susceptible to fraud if security measures are not in place. Alaska has extensive procedures and multiple layers of security that includes a combination of people, processes, and technologies that help us conduct secure, trustworthy, and accurate elections.

VOTING EQUIPMENT SAFELY STORED ALL YEAR

Ballots, machines, and keys are locked with tamper proof seals and stored behind locked doors, monitored by cameras and security systems. U.S. Cyber Security & Infrastructure Security Agency officers routinely evaluate these areas so we can make upgrades if needed. Federal and bipartisan experts test, examine, and certify all voting equipment as secure before we purchase it.

LOGIC AND ACCURACY TESTING (LAT)

LAT is a collection of pre-election procedures that ensure that the voting equipment and ballots to be used in an upcoming election can properly display the ballot, collect votes, and tabulate results. LAT is performed by the bi-partisan State review Board and again by bi-partisan Regional Counting Boards. At no time during the programming or testing of the tabulation equipment, is any of it connected to the internet or a network.

PAPER BALLOTS & ELECTION DAY SECURITY

Election security experts have consistently deemed paper ballots as one of the most secure forms of voting because they provide a physical paper trail that can be followed if there are any questions about the outcome of an election and are used during reviews and audits. Alaska has always been a paper ballot state. All review boards and polling places are staffed with bipartisan voters.

POST ELECTION AUDITS

State law requires the State Review Board (SRB) to conduct a hand count verification of random precincts that utilize precinct scanners. The randomly selected precinct must account for at least 5% of the total votes cast in each of the 40 house districts. If there is a discrepancy of more than 1% in the hand-count verification, a hand-count of all the ballots cast in the district is mandated. This has never happened.

Though not required by law, the division has the State Review Board also conduct a hand count verification on randomly selected house districts for the early voted ballots, absentee ballots, and questioned ballots with representation from each of the five regional offices. The SRB also uses registers, scanner tapes, scanner memory cards, count reports, absentee and questioned ballot envelopes, uncounted ballots, early voting certificates, VVPAT tapes, hand count precinct summary sheets, and other materials in their audits.

CYBER SECURITY

Alaska has standardized access controls to reduce the likelihood of unauthorized access to data. We also have intrusion detection processes and practices. In the case of a breach, these tools allow the awareness of what was compromised and potentially reduce the scope of a breach.

BALLOT CHAIN OF CUSTODY- URBAN PRECINCTS

Chain of custody documentation must be completed and signed by bipartisan teams of at least two election officials or division employees anytime ballots or voting materials are in their possession. Election officials ensure that all security seals and tamper-evident seals are verified and applied, and material transfer logs are signed prior to transportation. Chain of custody and security logs are maintained according to the division's record retention schedule.

Director's Office sends encrypted ballot images and ballot stub numbers to certified print shop



Regional Election Supervisor receives ballots from printer and verifies stub numbers



Precinct chairperson picks up materials and completes Official Ballot Receiving Checklist



Ballots are issued to verified voters



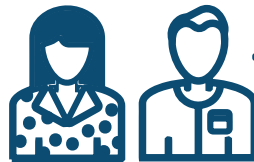
Marked ballots are secured inside ballot box until polls close



Poll workers complete Ballot Accountability Report numbers

- Ballots issued by Regional Elections Supervisor
- People who voted
- Ballots used, unused, and spoiled
- Voter signatures

Ballots are transferred to Regional Election Supervisor



Ballots picked up by contracted courier and sent on the next flight to the Director's Office in Juneau



Chain of custody information is verified



Chain of custody maintained



REMOTE PRECINCTS

Ballots used in remote precincts are sent and received via USPS. Materials are sealed in tamper-evident envelopes and locked in containers. We utilize:

- signature receipt confirmation
- package tracking
- signed check-in log for ballots and materials

SAMPLE RCV Detailed Report

General Election

State of Alaska

November 02, 2021

GOVERNOR / LT. GOVERNOR

Unofficial results

Number of positions to elect is 1.

Tabulation status: All Positions Filled
 Tabulation time: 8/10/2022 12:55:05 PM

Tabulation Options	
RCV method	IRV
Exclude unresolved write-ins	True
Declare winners by threshold	False
Uses precincts	True
Previous rounds evaluation method	None
Elimination type	Single
Fixed precision decimals	0
Perform elimination transfer in last round	True
Skip overvoted rankings	False
Votes to include in threshold calculation	Continuing ballots per round
Use first round suspension	False
Handling skip rankings	Exhausted on Two or More Ranks Skipped

RCV method: The ranked choice voting method used in Alaska is also known as IRV, meaning Instant Runoff Voting.

Exclude unresolved write-ins: The rankings for individual write-in candidates will only be considered if all of the write-in candidates collectively come in first or a close second in the first round of tabulation. If this happens, the division will “resolve” the write-in candidates and treat them individually in the tabulation. Until then, the write-in candidates will be unresolved and rankings for them will be excluded, meaning they will not be considered. However, a ranking for a write-in will not be considered a blank or skipped ranking, and an overvote involving a write-in candidate will still be considered an overvote.

Declare winners by threshold: Alaska law requires tabulation to continue until two candidates remain, unless a candidate achieves a majority in the first round. Even though a candidate that crosses the threshold by achieving a majority in a subsequent round will still win in the end, tabulation will continue until two candidates remain.

Uses precincts: The division will provide results for each precinct as though the ranked-choice tabulation were conducted for that precinct only. These results are just for informational purposes and have no bearing on the overall results.

Previous rounds evaluation method: This option is not relevant in Alaska. It would allow the system to remember tie breaking decisions and repeats them if the exact tie happens again in subsequent tabulation. Ties are instead resolved by lot if necessary, according to Alaska law.

Elimination type: The division will eliminate one candidate per round, the candidate with the least votes.

Fixed precision decimals: This option is not relevant in Alaska. It is only relevant for Single Transferable Vote and Points IRV methods, where votes and points are expressed in fractions. Each Alaska voter will cast one vote, which counts as one vote.

Perform elimination transfer in last round: This option is also not relevant in Alaska. It is only relevant for Single Transferable Vote and Point IRV methods.

Skip overvoted rankings: An overvote occurs when a voter gives multiple candidates the same ranking. Under Alaska law, an overvote and all lower rankings do not count. Thus, overvotes will not be skipped, but will invalidate subsequent rankings.

Votes to include in threshold calculation: Even though the winner in a second or later round will not be determined by a threshold calculation, the results will still display the number of “Continuing Ballots Per Round.” This means that inactive ballots, also called exhausted ballots, will be excluded from the tabulation once they become inactive. Ballots become inactive when there are no more rankings, an overvote, or a double skip. Inactive ballots will still count as votes for eliminated candidates.

Use First Round Suspension: This option is not relevant in Alaska. It would add an initial round of tabulation, which is not necessary.

Handling skip rankings: Ballots will become inactive, also called exhausted, if there are two or more skipped rankings in a row.

State of Alaska

Round 1

Candidate	Votes	Percentage
Wheeler / Pratt	13	38.24%
Rivera / Storm	7	20.59%
Jones / Pine	5	14.71%
Davis / Fredricksen	9	26.47%
Continuing Ballots Total	34	
Blanks	2	
Exhausted	0	
Overvotes	1	
Remainder Points	0	
Non Transferable Total	3	

Blanks: Ballots where there are no candidate rankings or the first two rankings are skipped.

Exhausted: Alaska law refers to these ballots as inactive. An inactive ballot is one that is no longer tabulated because it does not rank any continuing candidate, contains an overvote at the highest continuing ranking, or contains two or more sequential skipped rankings before its highest continuing ranking.

Overvotes: Ballots where a voter has assigned the same ranking to more than one candidate.

Remainder Points: This is not applicable to Alaska. It is used with only with a modified form of IRV where ranked choice voting results are evaluated on a district per district basis and each district has a set number of points.

Jones / Pine is eliminated because the candidate had the least amount of votes.

Elimination transfer for candidate Jones / Pine.

5 ballots have been transferred in the following manner:

Transferred from	Transferred to	Ballots	Votes
Jones / Pine	Wheeler / Pratt	1	1
Jones / Pine	Rivera / Storm	1	1
Jones / Pine	Davis / Fredricksen	3	3

Round 2

Candidate	Votes	Percentage
Wheeler / Pratt	14	41.18%
Rivera / Storm	8	23.53%
Jones / Pine	0	0.00%
Davis / Fredricksen	12	35.29%
Continuing Ballots Total	34	
Blanks	2	
Exhausted	0	
Overvotes	1	
Remainder Points	0	
Non Transferable Total	3	

Rivera / Storm is eliminated because the candidate had the least amount of votes.

Elimination transfer for candidate Rivera / Storm.

8 ballots have been transferred in the following manner:

Transferred from	Transferred to	Ballots	Votes
Rivera / Storm	Wheeler / Pratt	4	4
Rivera / Storm	Davis / Fredricksen	4	4

Round 3

Candidate	Votes	Percentage
Wheeler / Pratt	18	52.94%
Rivera / Storm	0	0.00%
Jones / Pine	0	0.00%
Davis / Fredricksen	16	47.06%
Continuing Ballots Total	34	
Blanks	2	
Exhausted	0	
Overvotes	1	
Remainder Points	0	
Non Transferable Total	3	

Wheeler / Pratt is elected because all other candidates have been eliminated.

Davis / Fredricksen is eliminated because the candidate was not elected in the last round.